



Security Compass

SD Elements Onsite deployment of Virtual Appliance

Authored by: Security Compass

Contents

SD Elements Virtual Appliance Deployment Guide	2
Introduction	2
Virtual Appliance (VA) Information and Resource Requirements	2
Deploying the Virtual Appliance in VMware vSphere.....	3
Deploying the Virtual Appliance in VMWare Server/Workstation & Fusion/Player	6
Initial VM IP configuration (Ubuntu and RHEL)	7
Part 1: Connecting to the VM	7
Part 2: Editing network interfaces	8
Part 3: Custom Configuration through Yaml.....	8
Part 4: Change the domain settings in UI	8

SD Elements Virtual Appliance Deployment Guide

Introduction

This guide covers the steps required to deploy the SDElements Virtual Appliance on VMware Hypervisors.

To follow this guide you will need:

- Digital download link with login credentials provided by SD Elements.
- In case of ESXi you will need credentials for the ESXi server that will host the virtual appliance.
- System credentials that were sent along with the virtual machine.
- Details about your network including IP address, netmask, gateway and DNS.(Unless you will be using DHCP with Bridged mode).
- VMWare vSphere Client, VMWare Server, Workstation or Player.

(Note in the case of ESXi based deployment you will need the correct version of the vSphere Client for your ESXi installation, this can be downloaded from the ESXi server or from the VMWare website.

Virtual Appliance (VA) Information and Resource Requirements

SD Elements OnSite Deployment is provided in the form of a Virtual Appliance.

Requirements:

- VMWare ESXi 4.1 or more recent
- Minimum 2 GB memory / Recommended 4GB
- Minimum 32 GB of disk space / Recommended 128 GB of disk space
- One Static Internal IP
- DNS name (e.g. sde.)
- Intranet SSL Certificate for HTTPS (OpenSSL/Apache compatible format)
- Inbound traffic needed VM:

TCP port 80 (HTTP)

TCP port 443 (HTTPS)

TCP port 22 (SSH) for maintenance/management

- Outbound Intranet SMTP Email access
- Outbound HTTPS access for fetching bi-weekly updates and patches
- Recommended – VPN connection or Webex sharing for SD Elements Debugging/Maintenance

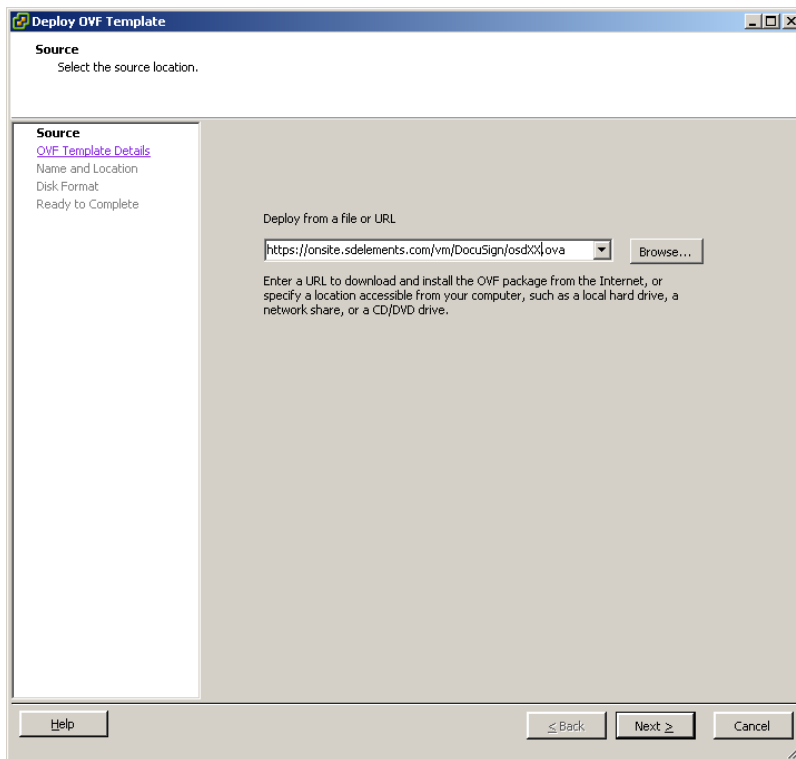
Deploying the Virtual Appliance in VMware vSphere

The virtual appliance must be deployed on VMware vSphere 4 or later.

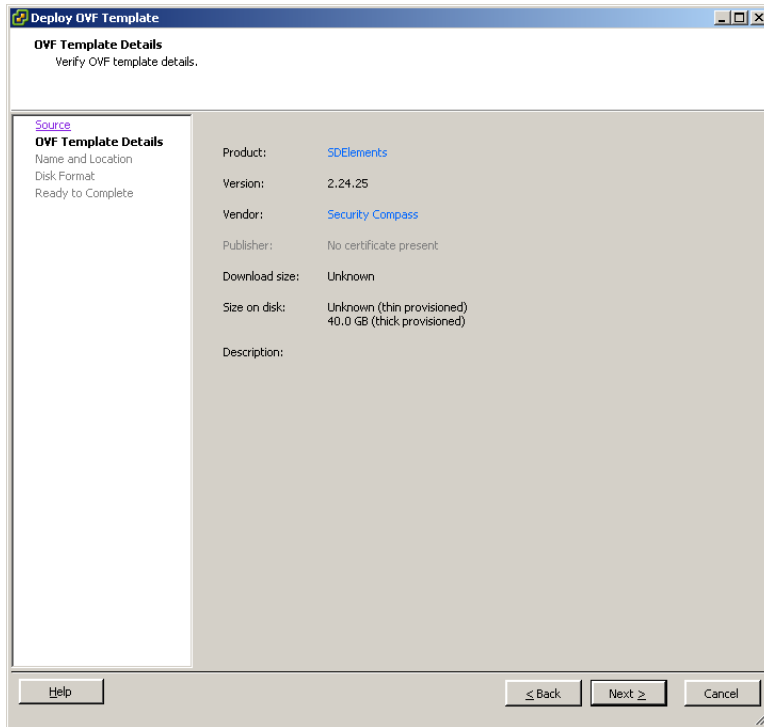
You can deploy the OVA VA either directly from a URL, or by downloading the OVA archive to local disk.

In the VMware vSphere Client, select File > Deploy OVF Template.

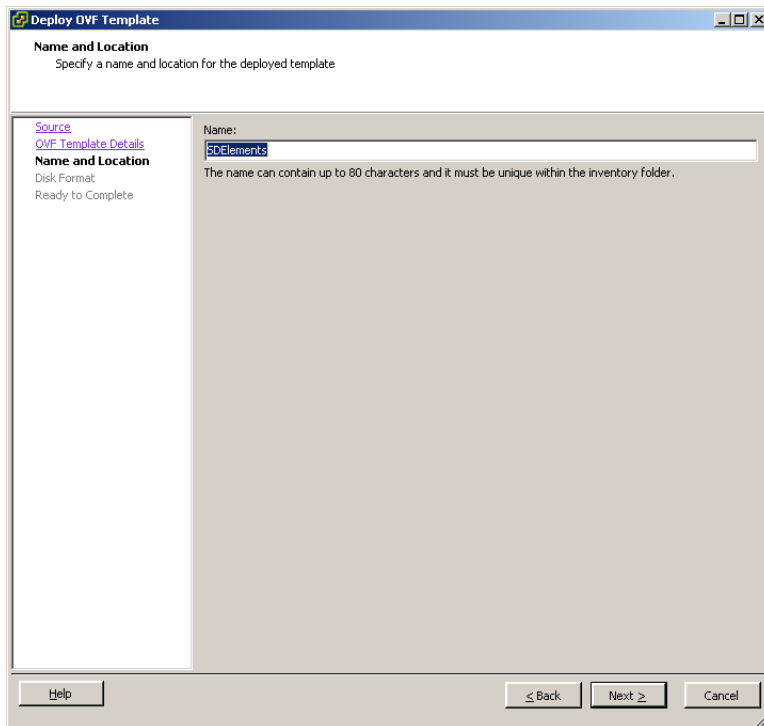
Choose either Deploy from URL or Deploy from file, based on where the OVA location.



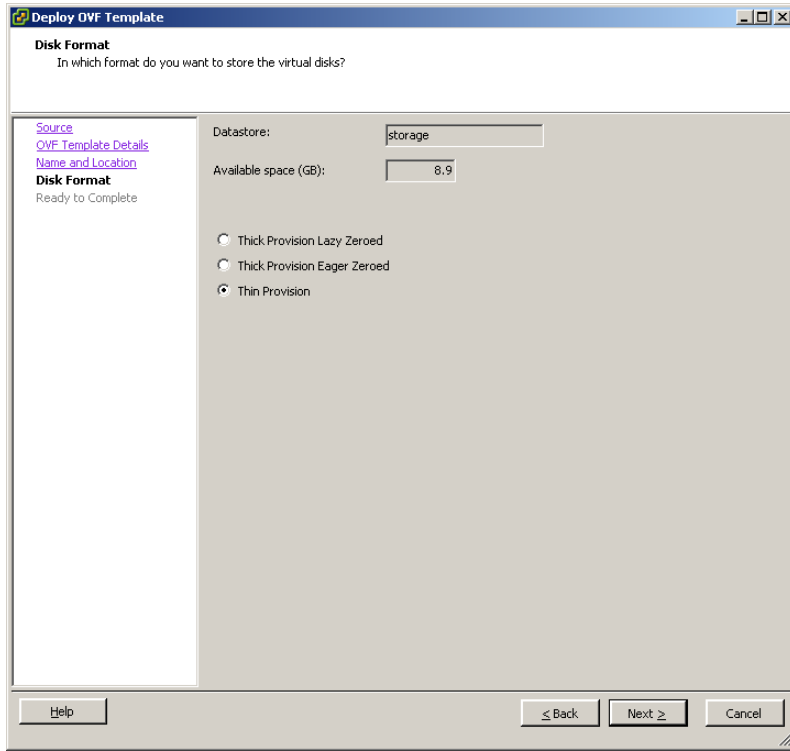
Confirm the image properties and settings.



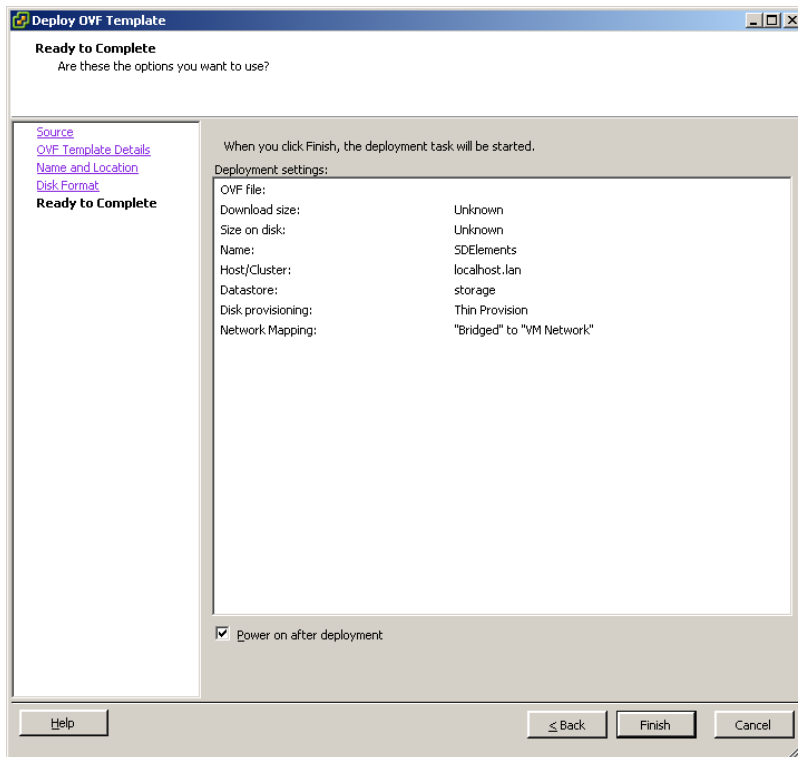
Choose a name for the Virtual Appliance or leave the default name:



Choose the storage location and type, we recommend using Thin Provisioned to conserve space.



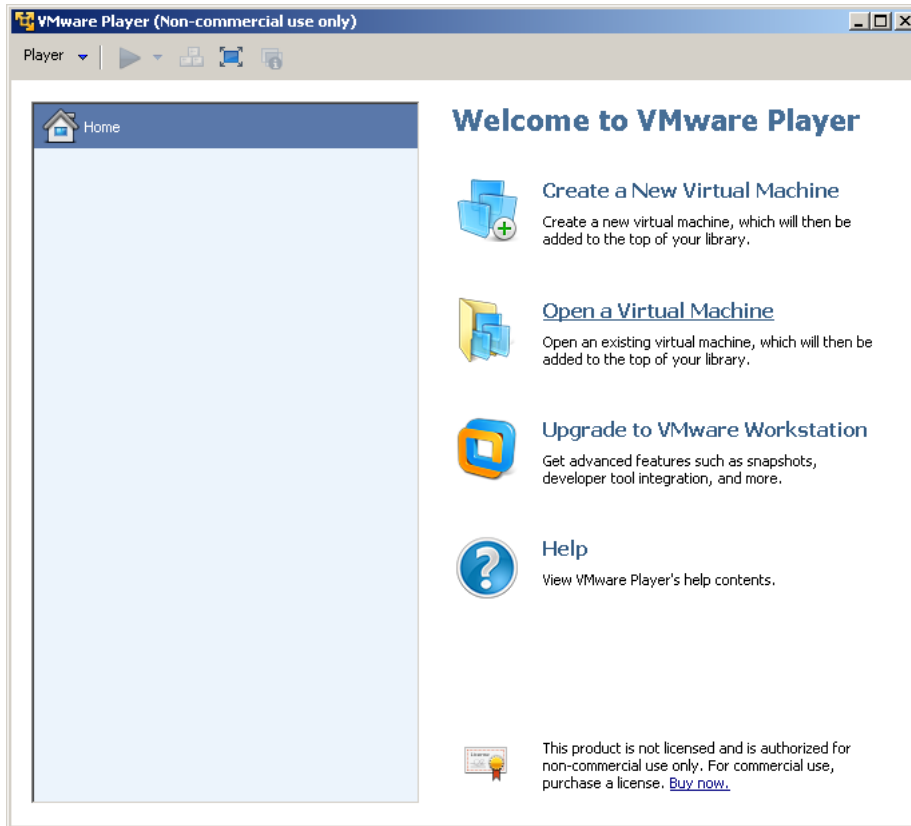
Confirm your selection or change parameters as required, select power on after provisioning.



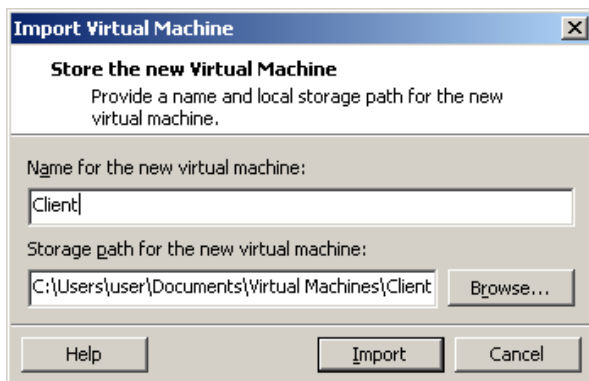
Deploying the Virtual Appliance in VMWare Server/Workstation & Fusion/Player

Obtain a copy of the OVA file containing the Virtual Appliance, this will need to be downloaded and placed on the same machine that's running the VMWare virtualization product.

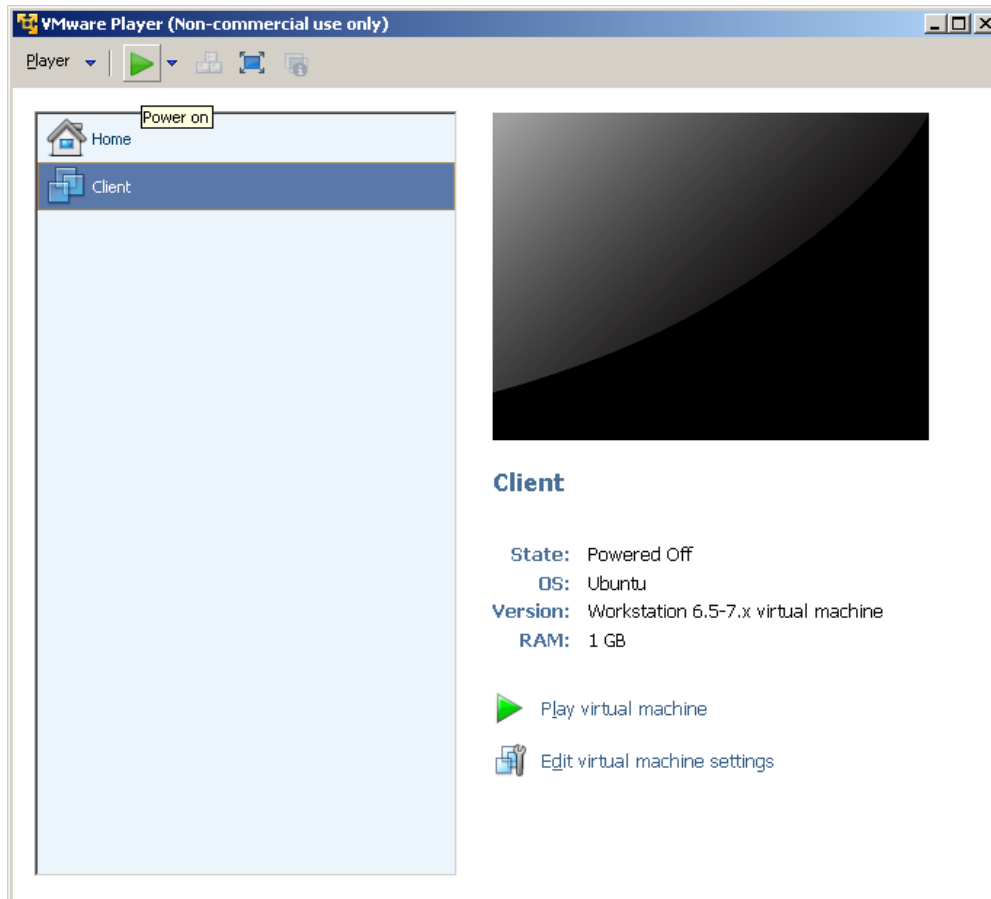
Start VMWare Product and Select Open a Virtual Machine.



Browse to the folder where you downloaded your OVA file and choose a name/storage path for the Virtual Appliance.



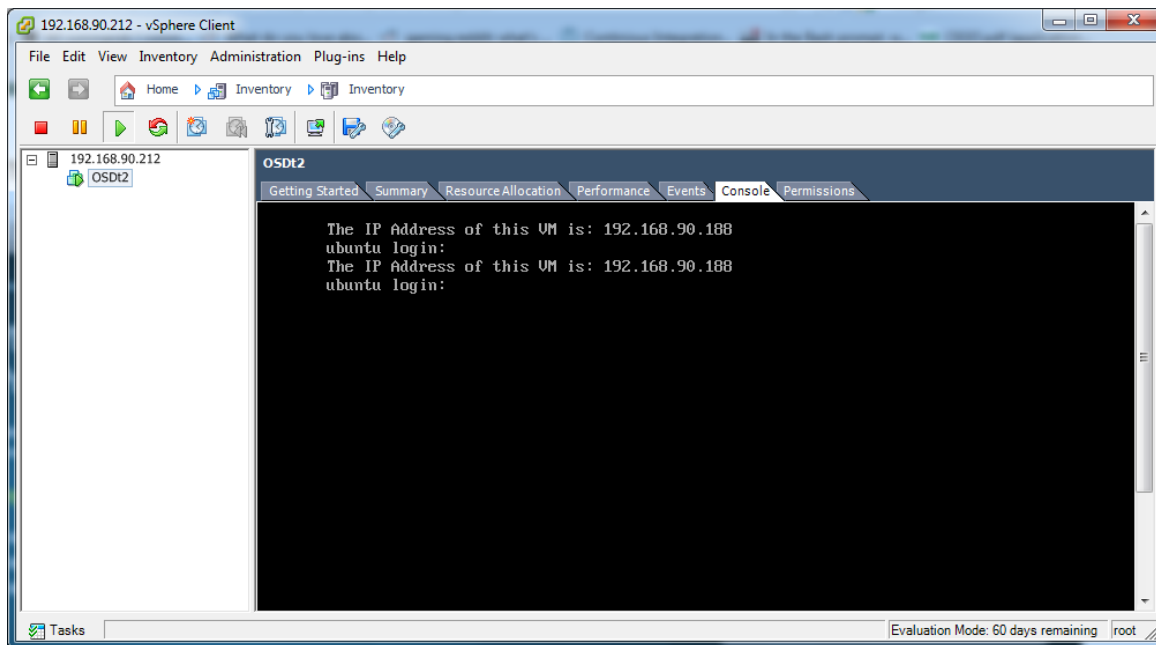
Now power on the Virtual Appliance:



Initial VM IP configuration (Ubuntu and RHEL)

Part 1: Connecting to the VM

5. Connect to your ESXi server using the VMware vSphere Client.
6. Once connected you should see the VM that you have imported, if it is not on you can power it on by right clicking on the VM and selecting Power-> Power On.
7. Select the Console tab while the VM is selected to see the boot process, if the OS prompts to check the disk for errors, press F to proceed with the check.
8. The VM will try to get an IP by default through DHCP, if it is able to the IP will be displayed above the console port, at this time the SDElements app can be accessed through <https://<assigned-ip>>. However it is preferred to have a static IP set for long term deployments.



9. You can login to the VM using the credentials sent to you along with the USB drive. If you are not sure what these are please email support@sdelements.com

Part 2: Editing network interfaces

Please refer to [Setting static IP on SDE OSD Appliance](#)

Part 3: Custom Configuration through Yaml

Some of the setting files (e.g. postfix configuration, ntp, cron) are handled by puppet. If you make any changes to those files, the changes will be overwritten.

Please refer to [Customization of SD Elements using the YAML File](#)

Part 4: Change the domain settings in UI

Once all the above setup is completed we need to login to the Web UI of SD Elements and change the domain settings. Please refer to [System: Domain Settings](#)

SD Elements Support

support@sdelements.com